

Black CAT Compact

The next generation in traffic monitoring



With the launch of the Black CAT Traffic Monitoring Outstation Platform, CA Traffic introduced the latest generation of technology into the market place.

Building on this technology, whilst focusing on the needs of our customers, the Black CAT Compact has been specifically aimed at the more traditional count classifier requirements.

Capable of running multiple survey types simultaneously, with provision for inputs of up to 24 inductive loops, the Black CAT Compact is capable of handling the majority of Traffic Monitoring requirements in a simple, easy to use stand-alone system utilising GSM/GPRS/3G/4G communications with battery or solar power options.

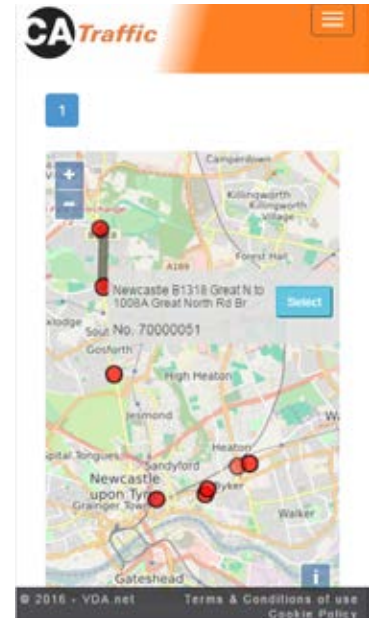
Additional capabilities, stemming from the ability to upgrade the standard unit into a more comprehensive system, allow for enhanced functionality such as user configurable class schemes, and single loop classification capability

The Black CAT Compact is compatible with all CA Traffic software products, including VDA-Pro R2, and is now UTMIC compatible in conjunction with the Catalyst instation.

- Battery or Solar Powered
- GSM/GPRS/3G/4G Communications Options
- Maximum 24 sensor inputs
- Sensor card positions with 8 channel inductive loop card
- Single Loop Classification
- Vehicle and bicycle detection
- User configurable class schemes
- Various survey types including:
 - Historical binned & Historical VBV
 - Real-time Statistics & Real-Time VBV
 - Real-time & Historical Mac addresses
- Ability to run multiple survey types simultaneously
- Built in Algorithms including:
 - HiOCC
 - Speed Threshold
 - Flow Threshold
- Compatible with all CA Traffic software
- Dual instation support



The Black CAT Compact is compatible with all existing CA software including the popular VDA-Pro data analysis package, recently updated to VDA-ProR2 to include Black CAT compliance.



Specifications

| | |
|---------------------------------|--|
| Loop Detector Maximum Feeder | 300M |
| Loop Detector Inductance Range | 80-350UH |
| Loop Detector Frequency Control | 50 100KHz |
| Adjustable Threshold | Manual or automatic |
| Signature Class Schemes | EUR6, CA10 DONEIS |
| Single Loop Classification | Same functionality as two loop per lane with reduced accuracy |
| Loop Inputs Supported | 24 |
| Dual installation support | Yes |
| Control Lines | 4xI/O and 2 Analogue |
| Speed Accuracy | +/- 3% at a 90% confidence |
| Length Accuracy | +/- 5% at 90% confidence |
| Class Accuracy | Typically >95% |
| Count Accuracy | Typically >99% |
| USB | Type A (PC) |
| Serial | RS232 up to 115200 baud |
| IP Protocols | TCP/IP, UDP/IP, SNMP, DNS, HTTP |
| Time Updates | SNTP or Custom Protocol |
| Simultaneous Connections | Installation: 4/engineer connections: 2 local 8 remote |
| Data Storage | SD, 4GB, typical 4000,000,000 vehicles |
| High Performance | ARM7 Processor |
| Logging Resolution | Speed: 0.1KPH/Length:1CM |
| Arrival Time Resolution | 1/10 or seconds |
| Algorithms Supported | HiOCC, Speed & Flow Threshold, Up to 10 bands |
| Temperature | Formally tested to -25 65OC, designed to 40 +80OC |
| Power Supply | 6V+2x 3V solar inputs |
| Logging Supported | Historical binned & VBV, Real-Time statistics & VBV Historical & Real-Time ID |

EMC

European Standard: EN50293 : 2000
Electromagnetic compatibility - Road traffic signal systems EN 55022 : 2006/EN 61000-3-2 : 2006/EN6100-3-3/A2 : 2005/EN 6100-4-2/A2 : 2001/EN 6100-4-3/A1 : 2008/EN 61000-4-4 : 2004/EN 6100-4-5 : 2006/EN 6100-4-6 : 2007/EN 6100-4-8 : 1993/EN 61000-4-11/A1 : 2001/HD 6338 S1 : 2001

Radio

European Standard: ETSI EN 300 330-2 V1.3.1 : 2006 Electromagnetic compatibility and radio spectrum Matters (ERM); Short Range Devices (SRD); Radio equipment in the frequency range 9kHz; Part 2: Harmonized EN under article 3.2 of the R&TTE Directive

Safety (Low Voltage Directive)

European Standard : EN 60950-1 : 2006
Information technology equipment - Safety

Environmental

UK Department of Transport Standard ; TR 2130
Issue C Environmental Tests for Motorway Communications Equipment

1119-211 06