

Clever SID

User Guide

- 1 Start **Collect** and connect the Palm to the SID using the cable provided.

Collect - Clever SID

Site	00000001
Dump File	001V0003.DMP
Main: 11.8 volts	Firmware 1.60
Period	60 mins
Config	No Data Records
Start	14:35 Tue 15 Aug 2006
End	14:35 Tue 15 Aug 2006
Pilot	14:37 Tue 15 Aug 2006

Collect Setup

The main screen shows the following information:

Site	Site Number
Dump File	Name of dmp file to be created upon Collection
Main	Main battery level
Firmware	Firmware version
Period	Survey binning interval
Config	Current survey configuration
Start	Start Time/Date of survey
End	End Time/Date of survey
Pilot	Time on Palm handheld

To Collect the data from the SID, tap **Collect**.

- 2 Tap **Setup** to enter the setup screen.

Any data on the SID must be collected before entering the set-up menu.

Setup - Clever SID

Speed Limit: ...30 (20) (30) (40) (50)

Max Display Speed: ...45 [+5] [+10] [+15]

Config: ▼ Per Vehicle

Site: 00000001

Synchronise Time & Date

OK Cancel

The **Speed Limit** can be set either by tapping on the dotted line and writing on the graffiti pad, or by tapping on one of the shortcut icons.

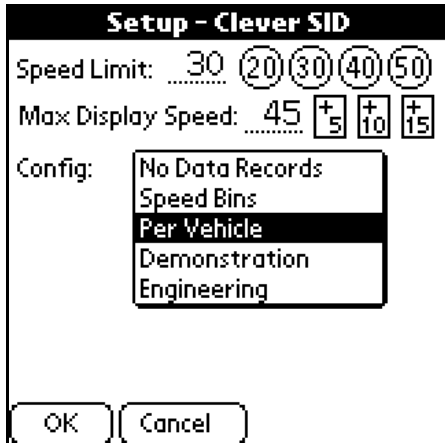
The **Max Display Speed** is the speed above the **Speed Limit** beyond which the SID will display bars and no speed information. It can be set in the same way as the **Speed Limit**.

The **Site Number** can be set in the same way as the **Speed Limit**. Changing the **Site Number** will not affect Collected data.

If **Synchronise Time & Date** is ticked, the time on the SID will be set to that of the Palm.

The options available in the set-up screen will vary depending on the configuration selected. The configurations available for the SID, and any additional options, are explained overleaf.

3



Config displays the kind of the survey the SID will carry out after the set-up is complete.

Tapping the down arrow brings up the list of available configurations.

No Data Records - No information is stored on the sign.

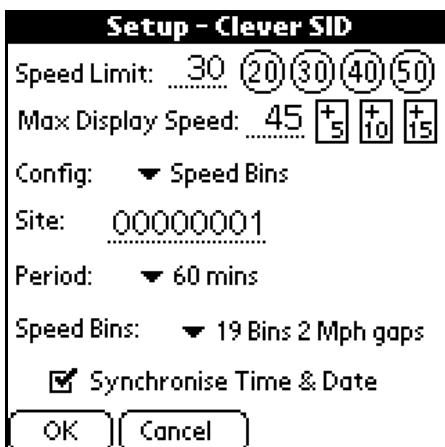
Speed Bins - Vehicles are binned by Speed.

Per Vehicle - Data is recorded for every vehicle counted.

Demonstration - The sign will flash speeds around the speed limit to demonstrate the different SID faces.

Engineering - This is used to test the radar head and should only be used if suggested by C&A.

4

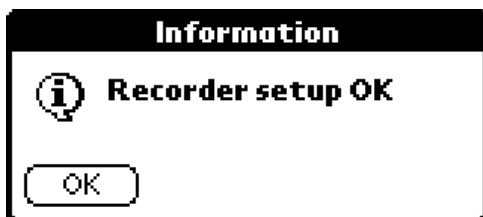


Additional Options:

Period displays the interval at which data is binned when carrying out a binning survey. Tapping the down arrows displays a drop down list of the available intervals.

Speed Bins shows the current bin configuration in a binning survey. The drop down list displays the configurations available. Tapping on the desired configuration selects it.

Once the settings are configured correctly, tap OK to set the SID up. A confirmation box as seen below will confirm that the SID was set-up successfully.



The SID will begin the survey as soon as the set-up process is completed.